

Address: 3705 S. Anthony Blvd. Fort Wayne, IN 46806

Phone: 260-744-3228 Fax: 260-744-3229

Email: [bethfw@yahoo.com](mailto:bethfw@yahoo.com) Web: [www.bethlehmlcms.org](http://www.bethlehmlcms.org)



## From the Pastor's Desk

### Keep the Rhythm

As the days grow longer and the weather grows warmer, our routines begin to shift. School lets out. Vacation plans fill the calendar. Weekends at the lake, family trips, travel ball tournaments, camping weekends, and backyard gatherings all begin to crowd into the rhythm of summer life. And somewhere in the midst of all that movement, it becomes very easy for worship to slowly drift to the margins. Not usually intentionally. Rarely out of hostility toward God. More often, it happens quietly. One Sunday missed becomes two. The habits that once shaped our weeks begin to loosen. Before long, we feel strangely disconnected not only from the church, but from the steady voice and presence of Christ Himself. That is why the words of Acts 2 are so important for us:

*“And they devoted themselves to the apostles’ teaching and the fellowship, to the breaking of bread and the prayers.” (Acts 2:42)*

Notice the word: devoted. The early Christians were not casual participants in the life of the church. Worship was not merely one option among many competing weekend activities. It was the center from which everything else flowed. Around Word and Sacrament, Christ was forming a people. Around preaching, prayer, fellowship, and the Lord's Supper, He was sustaining their faith and knitting them together into one body.

That same thing is still happening today. Every Sunday, something far deeper than a religious gathering is taking place. Christ Himself serves His people. Through His Word, He speaks forgiveness into weary hearts. Through confession and absolution, He lifts burdens we were never meant to carry alone. Through the Scriptures preached and sung, the Holy Spirit strengthens faith. At the Lord's Table, Jesus gives His true body and blood for the forgiveness of sins, life, and salvation. In worship, we are not simply expressing our devotion to God. First and foremost, God is serving us. Divine Service really does mean just that: the service of God toward His people. And we need that service more than we often realize.

Faith does not remain strong by accident. Christians are not sustained indefinitely on memories of past sermons or occasional spiritual moments. Just as our bodies need regular nourishment, so too our souls need the steady gifts of Christ. Week after week, He gathers us again because He knows how forgetful, distracted, anxious, and weary we become.

But worship is not only about “me and Jesus.” Acts 2 reminds us that the Christian life is also deeply communal. We need one another. Your presence matters more than you think. When you are here, others are encouraged. Your voice strengthens the singing. Your prayers join with the prayers of the congregation. Your conversations after worship become opportunities for care, comfort, laughter, and encouragement. In ways both seen and unseen, God uses the gathered fellowship of believers to uphold one another. And when someone disappears for a season, the body feels it.

*(Continued on next page)*

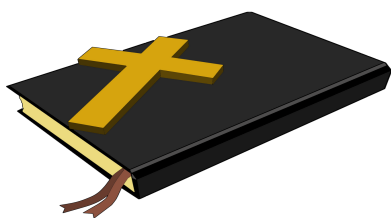
Summer will always bring interruptions to our normal patterns. Vacations are good gifts from God. Time with family is important. Rest is important. But even in the midst of changing schedules, the gathered people of God still need the rhythm of worship. So this summer, guard that rhythm carefully. When you travel, seek out a faithful church to attend. When you are home, make worship the anchor of your week rather than the leftover space around everything else. Keep receiving the gifts Christ longs to give you. Keep gathering with His people. Keep being formed by His Word. The earliest Christians devoted themselves to these things because they knew where life was found. We still find life there too. We'll see you this summer!

Pastor Ben

## BETHLEHEM FAMILY LIFE MINISTRY

### EDUCATION HOUR

10:30am-11:30am



### Food Bank Report

By Sharon Shediack  
April

We provided food to 312 individuals. They included 136 children under the age of 18, and 36 individuals over the age of 60.

Our congregation provided 307# of food. We went to Community Harvest 4 times this month to purchase 1475# of food in the amount of \$830.

Our 15 volunteers gave 138 hours of their time. Thanks to ALL of you for all your many volunteer hours, dedication and the financial support you give to help provide this mission at Bethlehem.

Community Harvest's donation have been down. This limits what we can purchase from them.

We are in need of peanut butter, jelly and mac & cheese.



Every  
Donation  
Makes A  
Difference

### IN CHRIST ALONE

*Sonshine Club 2025 - 2026*

Children ages 3 yrs - 5<sup>th</sup> grade are invited to join us in the Sonshine Club room during the Education Hour after Sunday worship. Our theme this year will focus on stories of Jesus and how we can live in Him. Parents are always invited to join us and even children under 3 are welcome to participate with a parent present.



### DR. GEORGE FRY

Retired Concordia Theological Seminary professor George Fry returns to the Bethlehem Men's Prayer Breakfast on Saturday, June 27, 2026, to speak on "Pentecost, Persia, and Protestantism: Past and Present." All are welcome to join us for breakfast in the Bethlehem cafeteria at 8:30 AM followed by Dr. Fry's presentation and time for prayer. *"Ah, Sovereign LORD, you have made the heavens and the earth by your great power and outstretched arm. Nothing is too hard for you."* Jeremiah 32:17 NIV.



**Ways to watch WORSHIP ANEW:**

**Online - <https://worshipanew.org/>**

**Watch Worship Anew locally on**

**WPTA 21.2 (NBC) at 7:00 AM Sundays**

**WPTA 21.3 (MyNet) at 8:00 AM Sundays**

**June 7, 2026 – Second Sunday after Pentecost**

**Rev. Shayne Jonker**

**Insiders and Outsiders - Matthew 9:13**

Imagine a doctor who didn't want to be around sick people. The doctor comes into the waiting room, he looks at all those runny noses and itchy eyes, hears all the coughing and sneezing, and he covers his mouth and nose and runs out of the room as fast as he can. Not much of a doctor, is he? Nor would Jesus be much of a Savior if He didn't care for the company of sinners. That was Jesus' mission – His purpose for coming into the world – to seek and to save the lost, to become lost in our death in order than we might be found in Him.

*Featured Choirs:*

*Lincoln Lutheran High School, Lincoln, Neb.*

*St. Paul Lutheran Church, Decatur, Ind.*

*Featured Art and Architecture:*

*St. John Amelith Lutheran Church, Bay City, Mich.*

**June 14, 2026 – Third Sunday after Pentecost**

**Rev. Paul Shoemaker**

**Our New Heritage - Romans 5:6-15**

Our family's heritage is precious to us. We not only have a physical heritage, tracked throughout the years, but we also have a spiritual heritage. That new heritage connects us to Jesus and the blessings He comes to bring.

*Featured Choirs:*

*Concordia Lutheran High School Choir, Fort Wayne, IN.*

*St. Paul Lutheran School, Munster, IN.*

*Featured Art and Architecture:*

*Zion Lutheran Church, Bay City, Mich.*

**June 21, 2026 – Fourth Sunday after Pentecost**

**Rev. William Mueller**

**Be a Tool - Romans 6:12-23**

We celebrate the truth that we are, at one and the same time, a sinner who deserves nothing but God's wrath. But, we are forgiven by God and declared innocent of sin because of Jesus Christ. How do we live that truth out in our lives? Do we freely and willingly sin because we know we are forgiven? Do we struggle and beat ourselves up as we try to become better people? Or do we simply consider ourselves a tool?

*Featured Choir:*

*Holy Cross Lutheran School Junior Choir,*

*Fort Wayne, Ind.*

*Featured Art and Architecture:*

*Immanuel Lutheran Church, Bay City, Mich.*

**June 28, 2026 – Fifth Sunday after Pentecost**

**Rev. Scott Zeckzer**

**The Elephant in the Room - Jeremiah 28:5-9**

The Lord calls us to follow Him. This is difficult in a world that is against Christ. Yet, in Jesus, we have peace with Him in a hostile world.

*Featured Choirs:*

*Holy Cross Lutheran School, Fort Wayne, Ind.*

*St. John Lutheran School, Plymouth, Wis.*

*Indiana District LWML Choir*

*Featured Art and Architecture:*

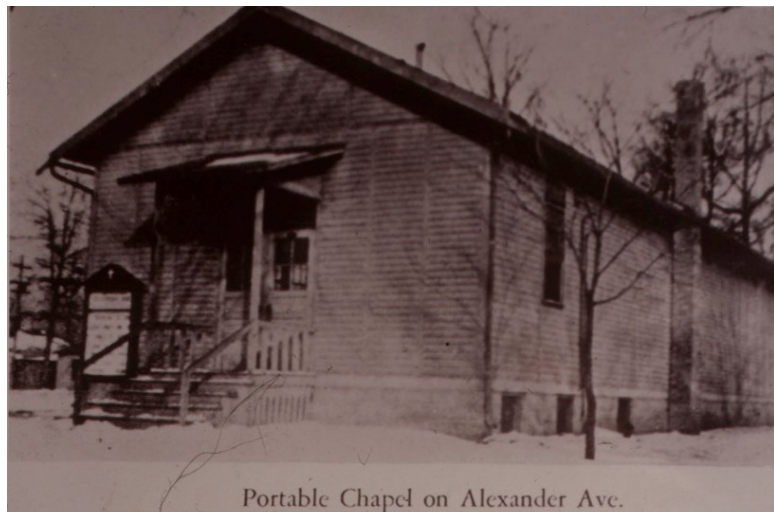
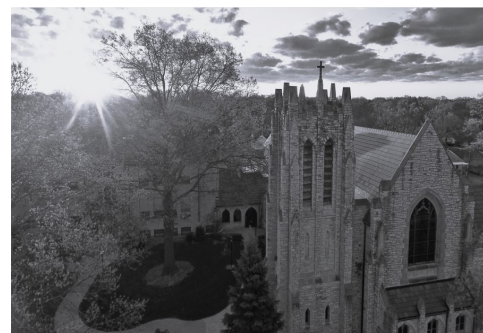
*Trinity Lutheran Church, Rochester, Minn.*



**[www.myfwl.org](http://www.myfwl.org)**

# Bethlehem Lutheran Church Celebrating 100 years 1926-2026

*"Lord, you have been our dwelling place throughout all generations." Psalm 90:1*



Portable Chapel on Alexander Ave.

## **SATURDAY, JUNE 20** **Neighborhood Walk**

At 10:00am we will walk to the site  
of Bethlehem's Portable Chapel  
at 3205 Alexander St.

Presentation: Mr. Ron Oetting

## **UPCOMING EVENTS**

### **SATURDAY, JULY 18**

Outdoor Worship Service  
10:00am – 3:00pm Community Fest / Health Fair  
Fellowship, Food, and Fun

### **SATURDAY, JULY 18**

Outdoor Worship Service 10:00am – 3:00pm  
Community Fest / Health Fair Fellowship, Food, and Fun

**It's not too late to order your  
100th anniversary shirts!**



Use the QR code to  
order shirts.

## **100TH ANNIVERSARY THANK OFFERING**

As of April 21<sup>st</sup>, we have raised \$35,762.98 toward our goal of \$100,000. Thank you to all who have already given! If you haven't yet had the opportunity to participate, you can give at upcoming anniversary events, use a special offering envelope, or give online. Thank you for joining in this response to God's goodness "throughout all generations."

## **BETHLEHEM TRIVIA**

1927, August: Pastor M. E. Reinke was installed as first resident pastor.

1930, June: The first confirmation class was 61 students.

1931, November: Pastor Arno C. Scholz was installed as Bethlehem's second pastor.

1951 Bethlehem's first day school teacher, Mr. G. M. Schmidt retired.

## Bethlehem Community Festival

Saturday, July 18, 2026

10:00a – 3:00p

**Come join us at our Church 2026 Community Festival for Fun and Fellowship!**

*\*Games and activities for all ages\**

*Clowns, Face painting, Balloons, Ring Toss, Cornhole, Bounce Houses, Basketball Hoops, Fire Truck, BINGO under the Tent, Live music, Hot dogs/Brats, Popcorn, Kona Frozen Ice Truck, Community Health Booths, Giveaways, and much more!*

*Coordinators: Denise DeYampert 260-341-4260 & Lisa Brattton 260 267 2611*

As Bethlehem Lutheran Church celebrates 100 years of God's faithfulness, this festival exists to gather our neighborhood in joy, renew relationships with past and present members, and open new doors for connection within the place God has planted us as we celebrate Christ's work among us and look forward to His continued work in our community.



The Small Groups Library, located near the Fellowship Hall, contains quite a selection of fiction and non-fiction titles for your reading pleasure and edification. You will find an especially large selection of devotion books for all ages. If you fit into any of the following categories, there's a devotion book that will help you begin or end your day in prayer and Scripture.

We have devotion books for:

<b>Teens</b>	<b>Children</b>	<b>Families</b>	<b>Mothers</b>	<b>Fathers</b>
<b>Wives</b>	<b>Husbands</b>	<b>Single adults</b>	<b>New Christians</b>	
<b>Those with various needs</b>		<b>Busy people</b>	<b>Anyone suffering with depression</b>	
<b>Those who feel worn out</b>		<b>Group leaders</b>	<b>Bible study groups</b>	

We have devotions co-written by groups of authors, and many written by a single author. We have devotion books that contain weekly readings, daily readings, readings for the whole year, or for a shorter period of time. There are devotions that are based on nature, or an individual book of the Bible. Some have great activities to make the message come alive for families.

If you're not currently doing personal or family devotions on a regular basis, or if you're ready for a new devotion book, please come check out our selection on Sunday (or any day of the week). If you see one that suits you, take it home. Feel free to keep it or pass it on when you are done with it, or bring it back to the library for someone else to enjoy.

**Would you like to review a book that is in our library?**

**Submit it to [hapners6@gmail.com](mailto:hapners6@gmail.com).**

# LOVE OUR NEIGHBOR

The Mental Health Initiative at Bethlehem is under the direction of Joyce Knipstein. **Bethlehem seeks to be a caring community and to provide hope.**



**June is National Men's Health Month**, the perfect time to be aware and open about a subject that many guys would rather not talk about. Yet, that's precisely why there is a silent epidemic in this country, and it's probably impacting your family, co-workers, teachers, community members or friends.

Rates of male depression and suicide have risen dramatically in recent years. According to the American Foundation for Suicide Prevention, men are almost four times more likely to die by suicide than women, and more than 6 million men in the U.S. experience symptoms of depression every year. Despite these sobering statistics, a recent survey revealed that 49% of men felt more depressed than they admitted to the people in their lives. Perceptions of weakness about requiring therapy, fears of social disapproval and cultural factors are some of the main barriers inhibiting men from seeking mental health assistance.

Men with depression often aren't diagnosed for several reasons, including:

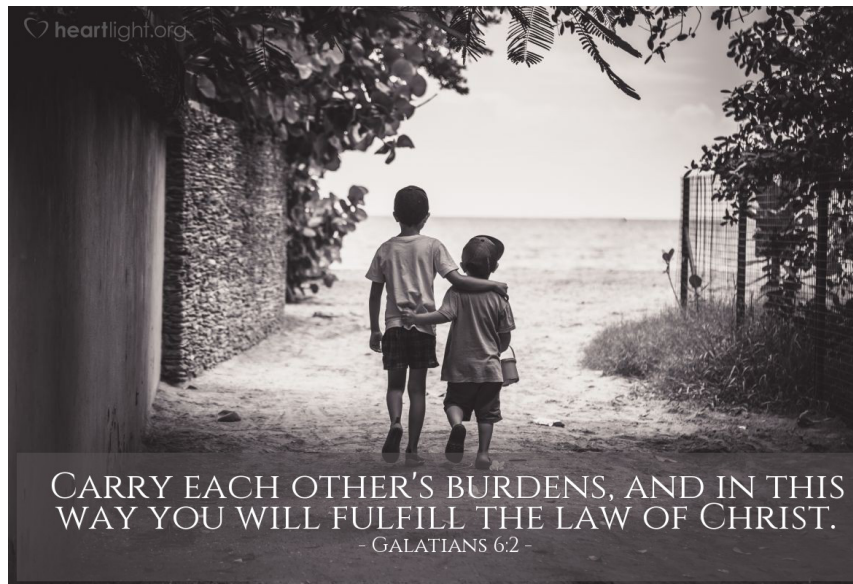
- Failure to recognize depression.
- Downplaying signs and symptoms.
- Reluctance to discuss depression symptoms.
- Resisting mental health treatment.

Notice the warning signs of depression. According to Families for Depression Awareness, signs of adult depression – which are changes from how the person usually is – may include:

- Talking very negatively or expressing hopelessness.
- Acting without concern for others.
- Abusing alcohol or drugs.
- Withdrawing from family and friends.
- Problems concentrating, making decisions or remembering.
- Talking suddenly about separation or divorce.
- Complaining of physical aches and pains.
- Eating too little or too much.
- Sleeping too much or too little.

Everyone faces challenges and obstacles in life that can knock you down, but some difficulties can weigh heavier than others and become a mental illness. If you begin to notice some of the previously listed warning signs in yourself or others it might be time to get professional help.

Finally, it's vital that all of us speak up and fight against stigma for the mental health of the men in our lives. We all have mental health, and we should all be able to talk about it when we're facing difficult moments in life.



**CARRY EACH OTHER'S BURDENS, AND IN THIS WAY YOU WILL FULFILL THE LAW OF CHRIST.**

- GALATIANS 6:2 -

*"Do not be anxious about anything, but in every situation... present your requests to God. And the peace of God, which transcends all understanding, will guard your hearts and your minds in Christ Jesus."*

**Philippians 4:6-7:**

## **BEREAVEMENT MINISTRY**

If you feel you would also benefit from the care of our Stephen Ministry Bereavement program, please call Pastor Ben (989-907-9481), or Threasa Lightning (260-417-1450), our Grief Coordinators.

# The Joyful Corner

## New Joy in the Journey

Darrell Delaney

*Those who sow with tears will reap with songs of joy.* Psalm 126:1-6

The journey of life isn't always easy. We face struggles, setbacks, and moments where it feels like our efforts are in vain. But the beautiful truth of Psalm 126:5 is that God does not waste our pain. The tears we shed are never in vain, for they are like seeds being sown for a harvest of joy.

I remember a time when I was going through a season of difficulty. It felt like everything was falling apart, and I couldn't see how any good could come from it. Yet, looking back, I realize that those moments of struggle were the very things that cultivated a deeper joy in me. God used the pain to refine me, teach me, and ultimately bring me to a place of greater peace and happiness.

We are promised that, even in our sorrow, God will bring forth joy. The joy doesn't always come immediately, and at times we have to endure some hard moments. But when the harvest comes, it's sweeter than we could have imagined. It's a joy that only God can bring—a joy that comes from knowing that he is with us through it all.

As we walk through life, let's remember that the joy that follows the tears is a new joy. It's a joy that comes from trusting God with our struggles and waiting patiently for his work to be completed in us.

God, thank you for the promise of joy in our life's journey. Help me to trust you through the difficult times and to hold on to the hope that we will be filled with joy in you. Amen.



DRAFT, not yet approved by the board  
Bethlehem Evangelical Lutheran Church  
Board of Directors Regular Monthly Meeting  
May 12, 2026

Members present: Pastor Ben Ahlersmeyer, Greg Shediack, John Bates, Rachele Dance, Dave Schult, John Stafford, Blake Sebring. Missing: Brian Bates, Dan Bates. Guest: Dena Schult.

May's regular meeting started at 6:35 p.m.

Pastor Ahlersmeyer started with a devotion reading the Gospel from the recent Sunday. Comforting workds that Jesus gives to his disciples from John 14: 15-21. "If you love Me you will keep my commandments, and my Father will give you a helper. I will not leave you as orphans, but I will come to you." The promise that He will not leave us alone. No matter what, we still have Christ who conquered death leading us.

The Community Center met recently with Tony Hudson from Blue Jacket. Very impressive and inspiring meeting. He was excited to hear our plans and wants to tour the building soon. He's very interested in what we are doing.

It sounds like we are studying the chimney repairs as part of our grant through Sacred Places. It may be more expansive than originally expected. It is being handled carefully and appropriately.

As for the minutes from the April meeting, and they were passed unanimously.

No change on the soul accounting for the month.

In the Treasurer's Report, John Stafford filled in for Brian Bates. One-third of the way through the year we are right where we expected to be as far as offerings and expenses.

We recently purchased a new mower, and the building and grounds committee reports they got a good deal. Despite the purchase they believe they can remain within budget for the year. The building and grounds committee has been hard at work fixing the first-floor drinking fountain, replacing lights and working to refurbish the first-floor room that formerly was home to the food bank.

John made the motion to accept the report and David Schult seconded. The vote passed unanimously.

In the Pastor's Report, we are getting close to the end of the school year. Bethlehem hosted the exceptional LSUS art fair recently. School officials may consider presenting a musical play next year which could be held here. One thing that will definitely be held at Bethlehem is the LSUS graduation

Pastor Ben is starting a confirmation class that will include team teaching with his father, Pastor Tom Ahlersmeyer and Mount Calvary. It is centered around the book Guided By Truth in a program the synod suggested.

In New Business, secretary Rhonda Cheng has expressed an interest in retiring soon, and has requested we look into how disability works for her through our insurance benefits program. The board needs to discuss and consider extending her benefits until the time the disability takes over. We are still gathering information, and the board is determined to figure this out to work to the benefit of Rhonda. She can work from home currently because of our new phone system.

As a board and church community, we want Rhonda to be taken care of. Her dedication to the congregation has been long and exemplary. The board appreciates and is very thankful to Rhonda for her continued excellent service to the church and our people.

Next board of directors meeting will be Tuesday, June 9.

The meeting adjourned with prayer at 7:25 p.m.

**Live a *life* of love,  
just as Christ loved us  
and gave himself up for us  
as a fragrant offering and sacrifice to God  
Ephesians 5:2**

# Bethlehem Mission News and Prayers

## BETHLEHEM MISSIONS AND PRAYERS

By Jane Miller

Dear Bethlehem Family,

This coming Sunday, 50 days after Easter, is when we celebrate Pentecost, the day Jesus had promised His followers right before ascending back up to Heaven to wait for, when He would send His Holy Spirit to empower them to Go into all the world with the Good News of His salvation! When I was teaching Kindergarten at Bethlehem, I loved celebrating Ascension Day with the children! And now, just 10 days later, we are celebrating what many people call the BIRTHDAY of the Christian Church on earth. It concludes what we call Eastertide.

A week or so after Easter, we received a very special letter from Joe and Suzy Schlie, in which Joe referred to the post-resurrection story of two disciples from Emmaus, walking home Easter evening on the 7-mile journey from Jerusalem, talking along the way, possibly about all that happened in that event-packed, sometimes confusing, and then Jesus' horrific crucifixion! I'd like to share Joe's very personal words in part of this letter:

*"A few weeks ago in the last days of my younger brother David's earthly pilgrimage, I sat next to him as he wanted to tell stories. Even in his reduced physical state, his family wanted to hear him talk about his childhood and his adult years. They wrote those things down so that we wouldn't forget and we would tell them again. We will do that. All this gives new thoughts on why we daily meditate on the words and actions of Jesus. Of course, we do this so that belief is built into our hearts, souls, and minds. We also do so to give us a heart of thankfulness. They are an anchor to our life in the midst of much trouble. We gain strength and life on the stony road that we are called to trod. We are taught to treat the least among us and to ask for forgiveness when we don't do that well. Saint Augustine heard the words 'Tolle, lege' (Take up and Read, in Latin) and it was a critical point in his conversion. We too should take up, read and hear the Gospel that brings belief, thankfulness and life."*

Our Miller family and the Schlie Family lived next door to one another on S Anthony Blvd when our children were young, Our Tim and Steve were especially close to Joe and David, and it hit our boys hard when David died. Both Joe and David as they grew into young men had their dear Dad, Pastor David Schlie's heart for sharing the Good News of Jesus, and not just with those who are just like us! Once we had transferred to Bethlehem, and even before when he was our neighbor, we learned so much from our dear Pastor Schlie! I think he would be very happy to see the way our Pastor Ben is leading our congregation to have Jesus' heart for people in our neighborhood! And of course, Joe and David's older brother, Pete, is one of our most active, serving elders right here at Bethlehem! Be sure to include the Joe Schlie Family in their Cru Arts and Culture mission, which after years of ministering in France, is now leading a mission right in our urban areas in the US.

Also, Pray for LAMB, Our local Lutheran Agency for Missions to the Burmese, Which is based mostly at New Life Lutheran Church, and Southwest Lutheran Church. Pray especially for the outreach work of Rev. James Keller, Rev. Soe Moe, and Taylor Htoo Aung (Medical Deaconess).

Finally, on this Pentecost, when Lutheran Bible Translators (LBT) observes International Day for the Unreached, pray all people will know God speaks their language by 2033!

The work of our missionaries  
is a magnificent expression  
of the Lord's redeeming love.

## JUNE BIRTHDAYS

1 – Christopher Hill	16 – Josie Reed
3 – Robert Miller	Sharon Varner
4 – Alexis Branigan	17 – Jason Mann
5 – Kaiden Graf-Martz	18 – Samara Hill-Roddy
Mark Hutchinson	21 – Karen Gerke
7 – DeAynne Suttle	Michael Williams
8 – Charles Adams	22 – Le’Asia Jones
9 – Eric Centurion	Gertrude Savage
10 – Lenka Bercot	23 – Ebbie Clark IV
Aaron Brown	Vicky Geisler
11 – Tyler Stevenson	Victoria Nelson
12 – Amber Martin	24 – Thomas Oberholtzer
13 – Karen Jarrell	25 – Rachele Dance
14 – Cesar Flores	26 – Victor Garcia
15 – Tamala Kahn	27 – Beau Bishop
David Volmerding	29 – Shantajah Lambert
	30 – Carla Johnson

## JUNE ANNIVERSARIES

2 – Earl Davis and Sherrill Davis
8 – Randy and Laurie Hapner
12 – Thomas and MaryAnn Oberholtzer
22 – Alvin and Valeria Harris
27 – Archie and Annie Smith
29 – Edward and Delores Tharp



LUTHERAN HOUR MINISTRIES

[www.lhm.org](http://www.lhm.org)

To find airings near you, check the broadcast guide at [lhm.org/guide](http://lhm.org/guide).

The Lutheran Hour is available today in many other ways beyond traditional radio. From the American Forces Network, Sirius XM satellite radio, [lutheranhour.org](http://lutheranhour.org), the Connected by LHM mobile app, Amazon Alexa, Spotify, iHeartRadio, YouTube, dialing in on your phone, and more, listeners can hear the weekly sermons whenever and wherever they are.

For more information about Lutheran Hour Ministries, visit [lhm.org](http://lhm.org).



**IS YOUR  
INFO UP  
TO DATE?**

If you have had a change in home address, home or cell phone number or email address, please be sure to let us know so that we can update our database.

If your children have moved out on their own please provide the office with their updated information.

**We want to stay in touch, so having accurate contact information is important to us.**

Please call, mail, or email the church office with any updates.



**Bethlehem**  
LUTHERAN CHURCH

Give your tithes and offerings online.

It's simple and secure.

Visit

[www.bethlehemlcms.org](http://www.bethlehemlcms.org)

Or hold the camera of your smartphone over this code then click the link provided.



**Bethlehem**  
LUTHERAN CHURCH

**Facebook  
Livestream**

Stream worship  
weekly  
9AM EVERY SUNDAY

Access the livestream by  
visiting

[www.facebook.com/bethlehemfortwayne](http://www.facebook.com/bethlehemfortwayne)



# June Servant Schedule

<u>Date</u>	<u>Altar Guild</u>	<u>Elder</u>	<u>Head Usher</u>	<u>Lay Readers</u>	<u>Power point</u>	<u>Live Stream</u>
6	Kim Ellison Sharon Shediack	Ed Ramos			Blake Sebring	
7		Greg Shediack	Evans Branigan	The Hapner Family	Allison Cheng	Hapner Family
13	Linda Stafford	Peter Schlie			Charlotte Ratliff	
14		Peter Schlie	Dan Bates	Kim Brooks	Aaron Brown	Hapner Family
20	Mary Snow Allison Cheng	Michael Johnson			Carla Johnson	
21		John Bates	Peter Schlie	John Staffor Linda Staddord	Josiah Hapner	Hapner Family
27	Sharon Dietrich Suzie Emley Amber Herndon	Brian Bates			Blake Sebring	
28		Greg Shediack	Evans Branigan	Glenn Emley	Allison Cheng	Hapner Family

## HELP SHARE OUR WORSHIP BEYOND THE WALLS


Our church's **Livestream Ministry** helps us reach members who are homebound, traveling, or unable to attend in person—and it's only possible because of faithful volunteers behind the scenes. Right now, we are in need of **Livestream operators** and **PowerPoint operators** to help support our worship services.

No experience is required—we **will provide training** and ongoing support. If you're comfortable with basic technology, willing to learn, and have a heart to serve, this could be a meaningful way to use your gifts. Even serving **once or twice a month** makes a big difference.

By volunteering, you're not just running equipment—you're helping people worship, stay connected, and feel included in our church family. If you're interested or would like more information, please contact the church office to sign up or for more information (260-744-3228).

**Thank you for prayerfully considering serving in this important ministry!**

# June 2026

Sunday	Monday	Tuesday	Wednesday	Thursday	Friday	Saturday
	1	2 6:30pm – Bd. of Elders	3 6:00pm - Choir 7:15pm - Handbells	4	5	6 8:30am Men's Bible Study <b>4:00pm Worship w/Comm</b>
7 <b>9:00am Worship w/Comm</b> 10:30am Education Hour	8	9 6:30pm – Bd. of Directors	10 6:00pm - Choir 7:15pm - Handbells	11	12	13 8:30am Men's Bible Study <b>4:00pm Worship w/Comm</b>
14 <b>9:00am Worship w/Comm</b> 10:30am Education Hour	15	16	17 6:00pm - Choir 7:15pm - Handbells	18	19	20 8:30am Men's Bible Study 10:00am Neighborhood Walk <b>4:00pm Worship w/Comm</b>
21 <b>9:00am Worship w/Comm</b> 10:30am Education Hour	22	23	24 6:00pm - Choir 7:15pm - Handbells	25	26	27 8:30am Prayer Breakfast <b>4:00pm Worship w/Comm</b>
28 <b>9:00am Worship w/Comm</b> 10:30am Education Hour	29	30 6:30pm – Bd. Of Property	<i>As a father shows compassion to his children, so the Lord shows compassion to those who fear him.</i> Psalm 103:13			