

\*\*\*\*\*

# BULLETIN ANNOUNCEMENTS

\*\*\*\*\*

## LAST WEEK AT A GLANCE

ATTENDANCE 85

Needed for Operating & Missions	\$ 6,057.70
Offering for Operating & Mission	\$ 22,004.00
Online Operating & Missions	\$ 481.36
Designated Gifts	\$ 1,645.00
Total Contributions	\$ 24,130.36

## OFFERINGS

You can make one-time or recurring gifts directly on our website. It's simple and secure.

[www.bethlehemlcms.org](http://www.bethlehemlcms.org)

Offerings may also be mailed to  
**Bethlehem Lutheran Church**  
3705 South Anthony Boulevard  
Fort Wayne IN 46806-4329.



Please make ALL checks payable to  
**Bethlehem Lutheran Church.** Use the  
memo line on check for designation.

## **FOOD BANK**

Bring a grocery bag of a few non-perishable items on Sundays. Bring to the front pews during the offering.

**OUR NEEDS ARE:**

**Dish Soap**

Copies of the sermon are available in the Narthex ask an usher for assistance.

## ACTIVITIES

+ THIS WEEK +



## TODAY'S ACTIVITIES

**9:00am Worship w/Communion**

10:00am Coffee Hour – FH

10:30am Education Hour - Adults –Café

Children - Sonshine Club

2:00pm Music Celebration

**Monday, February 16**

Presidents Day

**Tuesday, February 17**

10:00pm-11:30am Food Bank

**Wednesday, February 18**

10:00pm-11:30am Food Bank

**Thursday, February 19**

10:00pm-11:30am Food Bank

**Friday, February 20**

**Saturday, February 21**

4:00pm Worship w/Communion

**Sunday, January February 22**

9:00am Worship w/Communion

10:00am Coffee Hour – FH

10:30am Education Hour - Adults –Café

Children - Sonshine Club

**SERVING AMONG US  
+THIS WEEKEND+**

Preacher ..... The Rev. Ben Ahlersmeyer  
 Pianist (4:00pm)..... Kasey Hapner  
 Organist (9:00am) ..... Janelle Deal  
 Altar Guild ..... Linda Stafford

Elder  
 (4:00pm) ..... Ed Ramos  
 (9:00am) ..... John Bates  
 Head Usher ..... Ron Gallmeyer  
 Lay Reader (9:00am) .....Kim Brooks  
 PowerPoint Operators  
 (4:00pm) ..... Charlotte Ratliff  
 (9:00am) ..... Josiah Hapner  
 Sound Operator  
 (9:00am)..... Charlotte Ratliff  
 Live stream ..... The Hapner family

**SERVING AMONG US  
+NEXT WEEKEND+**

Preacher ..... The Rev. Ben Ahlersmeyer  
 Pianist (4:00pm)..... Kasey Hapner  
 Organist (9:00am) ..... Janelle Deal  
 Altar Guild ..... Sharon Dietrich  
 Suzie Emley, Amber Herndon

Elder  
 (4:00pm) ..... Peter Schlie  
 (9:00am) ..... Greg Shediack  
 Head Usher ..... Evans Branigan  
 Lay Reader (9:00am) ..... Glenn Emley  
 PowerPoint Operators  
 (4:00pm) ..... Blake Sebring  
 (9:00am) ..... Allison Cheng  
 Sound Operator  
 (9:00am)..... Charlotte Ratliff  
 Live stream ..... The Hapner family

**HELP SHARE OUR WORSHIP BEYOND THE WALLS**

We are in need of **Livestream operators** and **PowerPoint operators** to help support our worship services. If you're interested or would like more information, please contact the church office to sign up or for more information (260-744-3228).

**BETHLEHEM SERVICES ONLINE**

The link to watch online: <https://www.facebook.com/bethlehemfortwayne>

**READINGS FOR NEXT WEEK (Feb. 21<sup>st</sup> & Feb. 22<sup>nd</sup>)**

OLD TESTAMENT READING	Genesis 3:1-21
EPISTLE READING	Romans 5:12-19
GOSPEL READING	Matthew 4:1-11

*The altar flowers are given by Dorothea Thompson in memory of her parent's birthdays; Dorothy Thompson on February 9th and John Thompson on February 22nd.*

# **BETHLEHEM'S 100<sup>th</sup> ANNIVERSARY**

Our theme is "**Throughout All Generations**"

*"Lord, you have been our dwelling place throughout all generations." Psalm 90:1*

You are encouraged to attend a **Musical Celebration** which will be held Sunday, February 15th at 2:00pm at Bethlehem.

## **BIG-EYED FISH FRY**

As part of Bethlehem's 100th celebration, Big-Eyed Fish will prepare a 3-piece fried fish meal on **FRIDAY, MARCH 27**, from 4:00-7:00pm. Adult 3-piece fried fish meal tickets are available for \$15, child 1-piece fried fish meal tickets for \$5. Carry-out meals will be available.

Please plan to attend some or all of the upcoming events throughout the year.

### **APRIL 25**

Clean up for Shepherd's Hand Walk - Preacher: Rev. Eli Voigt

### **MAY 30**

Men's Prayer Breakfast 8:30am – Speaker: Dr. George Fry – “America Lutheranism in the 1920's”

### **MAY 31**

#### **Education Celebration / Church Potluck**

Service 9:00am – Preacher: Rev. Phil Rigdon - Blake Sebring – “Bethlehem Memories”

Help plan and host our upcoming **Alumni Dance!** We're looking for people to serve on the planning committee. Your ideas and energy can make a difference. Interested? Contact Sharon Shediack or the church office.

\*\*\*\*\*

## **BETHLEHEM TRIVIA**

- In August, 1927, Rev. M. E. Reinke was installed as Bethlehem's first pastor.
- January, 1928, Betty Jean Grote was the first person to be buried as a member of Bethlehem.
- In April, 1929, Leonard Bearman and Myrtle Harris were the first couple to be married at Bethlehem.
- In 1976 Rev. Dr. Armin C Oldsen gave the address for the 50<sup>th</sup> Anniversary Banquet.

# BETHLEHEM'S 100<sup>th</sup> ANNIVERSARY – T-SHIRTS

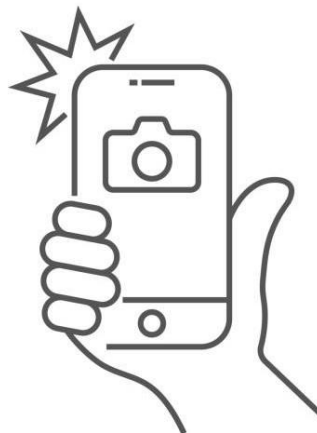


Bethlehem is celebrating our 100th anniversary! As a way to celebrate we have started a campaign to order shirts. Please take a look and consider supporting our church!



## TAKE AND SHARE PICTURES

As part of Bethlehem's 100th anniversary celebration, we are compiling a yearbook/church directory which will be published at the conclusion of the year. We ask you to send us any photos appropriate to our 100th anniversary, maybe even wedding, events, school activities or baptism photos from the past. We can't promise we'll use them all, but we'll do our best!



We are also going to be collecting comments we can include in this yearbook. Instead of signing this yearbook, we'd like to ask you to consider contributing a comment by answering one simple question: What has Bethlehem meant to your life?

Thank you!

You can submit them by emailing the church the office at [bethfw@yahoo.com](mailto:bethfw@yahoo.com).

\*\*\*\*\*

## LENTEN BIBLE STUDY

"Join your Bethlehem family for a Lenten Bible Study series starting Sunday, February 22 through Sunday March 29 from 10:30 (45?) - 11:30. We will be focusing on the Parables of Luke 15. Pastor Ben will start on the 22nd and Jon will lead the next four. Come hear how the Angels will rejoice when those lost are found as we prepare ourselves for the death and resurrection of our Lord."

## **LENTEN MEALS**

During Lent we would like to gather together to share a simple meal before our midweek services like we did during Advent. The meals will begin on **February 25<sup>th</sup>** with the meal starting at 5:30. This was a great time to share a meal and fellowship with our Bethlehem family, if you didn't get a chance to participate then we hope to see you during Lent! Look for sign-up sheets to volunteer to bring food items to share in the Fellowship Hall soon! There will **NOT** be a meal on Ash Wednesday.

\*\*\*\*\*

## **SERVE AT THE RESCUE MISSION**

Help serve lunch at the Rescue Mission!  
Volunteers needed every 4th Sunday of the Month. Can't serve physically? Bake instead!

## **CHANGING FOOTPRINTS**

Changing Footprints collects both new and gently worn shoes and distributes them to individuals who are homeless, affected by disasters, or otherwise in need. They are currently operating right here at Bethlehem and could use volunteers to help sort the many shoes they receive. If you can donate just a few hours a month, your help would make a big difference! For more information or to sign up to volunteer, please contact Cheryl at 260-341-0167.

## **CONCORDIA LUTHERAN HIGH SCHOOL**

Concordia Lutheran High School's Theater Department invites you to its winter musical, *Disney's The Little Mermaid*. Directed by Fine Arts Chair Chris Murphy with musical direction by Isaac Weander, performances will take place on Friday, February 27 and Saturday, February 28 at 7:30pm, and Sunday, March 1 at 2:00pm. Tickets are available online or at the CLHS Auditorium Box Office starting 30 minutes before show time.

\*\*\*\*\*

## **LSUS News**

\*\*\*\*\*

**Please pray for these students/staff: Emersyn, Elijah, Joy, Judah, Trevion, Key'Vontay, Trinidee, Melvin, Jeremiah, and Mrs. Blake.**

## **HOST A CLUB!**

It is time to sign up to host a club! It's only one day per week until 4:15, and YOU are in control of how many students, what grade levels, the topic, etc. Dates are looking like the week of March 9th through the week of April 20th. If you want to host a club but are looking for ideas, let me know! I'm more than happy to help with brainstorming! Please reach out to Danielle Ramsey (LSUS 5th grade teacher), 260-744-0459 with any questions!

## **Phoenix Basketball Soars this Season!**

The Boys Varsity basketball team, led by Coach Buxton wrapped up an exciting season as the LSAA South Division Champions, demonstrating determination, teamwork, and heart every time they stepped on the court. The Phoenix carried that momentum into the LSAA Tournament, battling tough competition and earning a 4th place finish. At the Suburban Bethlehem Tournament, our boys brought home 2nd place. The players represented LSUS with pride this season and continued to grow together and compete with strong sportsmanship. The season isn't over yet — the Phoenix will rise again as they head to the ILSAA State Tournament beginning February 28th.



LSUS's Junior Varsity team, led by Mr. Pearson, had a good season, working hard to develop skills and build teamwork for the future of the program. Their effort, growth, and commitment laid a solid foundation and provided valuable experience for players moving up in the years ahead.



Both teams were supported all season long by the LSUS cheerleading squads, led by Mrs. Fink, Mrs. Blake, and Coach Pree. Their energy, spirit, and encouragement from the sidelines helped lift the team and keep the crowd engaged at every game. Their dedication and school pride truly made a difference.



## Encouragement Found in Scriptures:

And we know that for those who love God all things work together for good, for those who are called according to his purpose. — Romans 8:2

A chalkboard-style advertisement for the LSUS Apparel Store. The text reads: "LSUS APPAREL STORE NOW OPEN", "https://lutheransouthunity.itemorder.com/shop/home", "CHECK OUT WHAT'S AVAILABLE FOR YOUR STUDENT AND FOR YOU. ALL ORDERS WILL BE PROCESSED AFTER THE STORE CLOSSES.", and "THE STORE WILL CLOSE AT MIDNIGHT ON FEBRUARY 26TH." Below the text are images of various apparel items including t-shirts and jackets.

## **PLEASE CONTINUE TO PRAY**

### **For our members;**

<b>Teddy Bishop</b>	<b>Beau Bishop</b>	<b>Ruby Bonner</b>	<b>Lois Branigan</b>
<b>Margaret Burger</b>	<b>Willard Brown</b>	<b>Derek Crane</b>	<b>Dana Crane</b>
<b>Cathy Dykstra</b>	<b>Mary Ellen Emley</b>	<b>Ina Gaunt</b>	<b>Vicky Geisler</b>
<b>Jean Hille</b>	<b>Carla Johnson</b>	<b>Carla Kay</b>	<b>Gladys Middleton</b>
<b>Bob Miller</b>	<b>Jane Miller</b>	<b>Louise Nahrwold</b>	<b>Eddie Pierce</b>
<b>Adam Rice</b>	<b>Jewel Robinson</b>	<b>Doris Scott</b>	<b>Thomas Tinsley</b>
<b>Phil Urbahns</b>	<b>Dave Volmerding</b>		

### **For our friends and family:**

**Suzanne Amt, Vicky Baker** (mother of Cathy Finner), **Al Bebout** (brother of Amber Herndon), **Meg Busse** (niece of Annette Diemer), **Darryl Calloway, Jeremiah Caper** (nephew of Deanna Nelson), **Maria Gema Camumot** (aunt of Nancy Pierce), **Mark Curten** (Deanna Nelson), **Adrian Dance Jr.** (grandson of Rachelle Dance), **Matthew Derby** (friend of the Hapner family), **Donna Emley, Tina Foster** (mother-in-law of Sara Robinson), **Tammy Gibson** (sister of Threasa Lightning), **Tony Griggs** (brother of Denise DeYampert), **Collins Gusching** (great-granddaughter of Pam Morvilius) and her parents, **Alec and Georgia Gusching, Karly Herndon** (granddaughter of Dan Scheerer and Amber Herndon), **Larry Hollman** (brother-in-law of Greg Finner), **Mary R. Harris-Hill** (sister of Claudia Harris), **Don Kovac** (father of Michelle Miller), **John Moerer** (son-in-law of John and Shirley Davis), **Karen Norby** (friend of Linda Stafford), **Brian Rasso** (brother of Gene Kalthoff), **Paul Roach** (son of John and Linda Stafford), **Jordyn Ruch** (cousin of Miracle Nelson), **Patricia and Natasha Saylor** (friends of Kathy Brehm), **Tiffany Stafford** (friend of Kimberly Brooks), **Beverly Van Nalten** (mother of Jennifer Bradley), **LaToya Williams** (daughter of Ocleva Williams), **Laura White** (friend of Linda Stafford's son Paul Roach), and those we name in our hearts.

**For the families of Bethlehem Lutheran Church:** We pray for Heather Weemes, Amber Williams, Chamilon Williams, Clarence Williams, Linda Witte, Suzanne Wright, Delores Wright, and Kathy Young, Josie Reed and Brittany Ingrams.

**For our church:** Gracious Father, we give You thanks for all the blessings You have poured out on this church through the years—for lives baptized, sins forgiven, faith nurtured, and hope restored. As we look ahead, grant us wisdom and humility to follow where You lead. Keep us centered on Christ, trusting not in our strength, but in Your promises.