

\*\*\*\*\*

# BULLETIN ANNOUNCEMENTS

\*\*\*\*\*

## LAST WEEK AT A GLANCE

ATTENDANCE 82

Needed for Operating & Missions	\$ 6,057.70
Offering for Operating & Mission	\$ 2,612.00
Online Operating & Missions	\$ 1,233.77
Designated Gifts	\$ 12,551.00
Total Contributions	\$ 16,396.77

## OFFERINGS

You can make one-time or recurring gifts directly on our website. It's simple and secure.

[www.bethlehemlcms.org](http://www.bethlehemlcms.org)

Offerings may also be mailed to

**Bethlehem Lutheran Church**

**3705 South Anthony Boulevard**

**Fort Wayne IN 46806-4329.**

Please make ALL checks payable to Bethlehem Lutheran Church. Use the memo line on check for designation.



## ACTIVITIES

+ THIS WEEK +



## TODAY'S ACTIVITIES

**9:00am Worship w/Communion**

10:00am Coffee Hour – FH

10:30am Education Hour - Adults –Café

Children - Sonshine Club

## Monday, February 9

## Tuesday, February 10

10:00pm-11:30am Food Bank

6:30pm Board of Directors

## Wednesday, February 11

10:00pm-11:30am Food Bank

## Thursday, February 12

10:00pm-11:30am Food Bank

## Friday, February 13

## Saturday, February 14

4:00pm Worship w/Communion

## Sunday, January February 15

9:00am Worship w/Communion

10:00am Coffee Hour – FH

10:30am Education Hour - Adults –Café

Children - Sonshine Club

2:00pm **Musical Celebration**

## **FOOD BANK**

Bring a grocery bag of a few non-perishable items on Sundays. Bring to the front pews during the offering.

**OUR NEEDS ARE:**

**Soups and Tuna**

Copies of the sermon are available in the Narthex ask an usher for assistance.



# **BETHLEHEM'S 100<sup>th</sup> ANNIVERSARY**

Our theme is "**Throughout All Generations**"

*"Lord, you have been our dwelling place throughout all generations." Psalm 90:1*

You are encouraged to attend a **Musical Celebration** which will be held Sunday, February 15th at 2:00pm at Bethlehem.

As part of Bethlehem's 100th celebration, Big-Eyed Fish will prepare a 3-piece fried fish meal on Friday, March 27, from 4:00-7:00pm. Adult tickets are available for \$15, child tickets for \$5. Carry-out meals will be available.

Please plan to attend some or all of the upcoming events throughout the year.

## **FEBRUARY 15**

Transfiguration Sunday – **Musical Celebration** - 2:00pm

Michael Hollman, from Zion Lutheran Church Fort Wayne, will be the organist and Kasey Hapner, from Bethlehem Lutheran Church will be the pianist. Kasey Hapner and Mary Snow will be featured soloists. The Bethlehem Handbell ringers will play and the congregation will sing several hymns. Followed by light refreshment.

## **MARCH 27**

**Big-Eyed Fish Fry** 4:00pm -7:00pm - Adult tickets are available for \$15, child tickets for \$5. Carry-out meals will be available.

## **APRIL 25**

Clean up for Shepherd's Hand Walk - Preacher: Rev. Eli Voigt

## **MAY 30**

Men's Prayer Breakfast 8:30am – Speaker: Dr. George Fry – “America Lutheranism in the 1920's”

## **MAY 31**

**Education Celebration / Church Potluck**

Service 9:00am – Preacher: Rev. Phil Rigdon - Blake Sebring – “Bethlehem Memories”

Help plan and host our upcoming **Alumni Dance!** We're looking for people to serve on the planning committee. Your ideas and energy can make a difference. Interested? Contact Sharon Shediack or the church office.

# BETHLEHEM'S 100<sup>th</sup> ANNIVERSARY – T-SHIRTS



Bethlehem is celebrating our 100th anniversary! As a way to celebrate we have started a campaign to order shirts. Please take a look and consider supporting our church!



\*\*\*\*\*

## BETHLEHEM TRIVIA

- In August, 1927, Rev. M. E. Reinke was installed as Bethlehem's first pastor.
- January, 1928, Betty Jean Grote was the first person to be buried as a member of Bethlehem.
- In April, 1929, Leonard Bearman and Myrtle Harris were the first couple to be married at Bethlehem.

\*\*\*\*\*

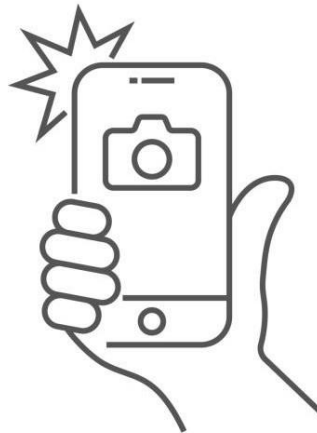
## TAKE AND SHARE PICTURES

As part of Bethlehem's 100th anniversary celebration, we are compiling a yearbook/church directory which will be published at the conclusion of the year. We ask you to send us any photos appropriate to our 100th anniversary, maybe even wedding, events, school activities or baptism photos from the past. We can't promise we'll use them all, but we'll do our best!

We are also going to be collecting comments we can include in this yearbook. Instead of signing this yearbook, we'd like to ask you to consider contributing a comment by answering one simple question: What has Bethlehem meant to your life?

Thank you!

You can submit them by emailing the church the office at [bethfw@yahoo.com](mailto:bethfw@yahoo.com).



## BETHLEHEM BAKERS

Cookies for 100th anniversary events needed. Freeze them in your freezer until needed or bring to church freezer in kitchen.

## **LENTEN MEALS**

During Lent we would like to gather together to share a simple meal before our midweek services like we did during Advent. This was a great time to share a meal and fellowship with our Bethlehem family, if you didn't get a chance to participate then we hope to see you during Lent! Look for sign-up sheets to volunteer to bring food items to share in the Fellowship Hall soon!

\*\*\*\*\*

## **SERVE AT THE RESCUE MISSION**

Help serve lunch at the Rescue Mission!

Volunteers needed every 4th Sunday of the Month. Can't serve physically? Bake instead!

## **CHANGING FOOTPRINTS**

Changing Footprints collects both new and gently worn shoes and distributes them to individuals who are homeless, affected by disasters, or otherwise in need. They are currently operating right here at Bethlehem and could use volunteers to help sort the many shoes they receive. If you can donate just a few hours a month, your help would make a big difference! For more information or to sign up to volunteer, please contact Cheryl at 260-341-0167.

## **CONCORDIA LUTHERAN HIGH SCHOOL**

Concordia Lutheran High School's Theater Department invites you to experience the magic of its winter musical, *Disney's The Little Mermaid*, a hauntingly beautiful love story based on the beloved Hans Christian Andersen tale and the classic animated film. Featuring unforgettable music by eight-time Academy Award winner Alan Menken, including favorites like "Under the Sea," "Kiss the Girl," and "Part of Your World," this production promises an evening filled with heart, humor, and wonder. Directed by Fine Arts Chair Chris Murphy with musical direction by Isaac Weander, performances will take place on Friday, February 27 and Saturday, February 28 at 7:30pm, and Sunday, March 1 at 2:00pm. Join us for this enchanting celebration of student talent and storytelling on the Concordia stage. Tickets are available online or at the CLHS Auditorium Box Office starting 30 minutes before show time.

\*\*\*\*\*

# LSUS News

\*\*\*\*\*

Please pray for all Lutheran schools.

## Boys Basketball End of Season

Our Boys Basketball Varsity team finished the season as the LSAA South Division Champions! The team placed 4th in the LSAA Tournament after a couple tough, close games where they fought hard until the final buzzer. We are incredibly proud of their effort and teamwork.





**Making the dream of a  
Christian education a  
reality for families  
through scholarships!**

---

## **Gov. Braun Opt-in to the Federal Scholarship Tax Credit Program!**

---

On July 4, President Trump signed “The One Big Beautiful Bill” into law. One aspect of this bill includes a Federal Scholarship Tax Credit (FSTC) program that is modeled after successful state tax credit scholarship programs throughout our country, including Indiana. On January 22, Gov. Braun opted-in to the FSTC, making it possible for non-public schools in Indiana to participate in the program!

### **Program Details**

- The bill allows for a 100% Federal Tax Credit for donations from individuals to Scholarship Granting Organizations, just like our Lutheran SGO.
- There is a \$1,700 maximum Federal Tax Credit per taxpayer per year.
- Donors can designate their gift to be used for scholarships at the school of their choice.
- Businesses are not allowed to claim this credit.
- There is no sunset date on this legislation. It is permanent.
- There is no aggregate tax cap. The \$1,700 maximum Federal Tax Credit is available to every taxpayer in our country.
- There is a five-year rollover on this tax credit.
- Scholarship recipients must come from families earning under 300% of the Median Local Income.
- The U.S. Treasury Department is working on determining the final rules that will govern the FSTC.
- **The FSTC begins on January 1, 2027. FSTC donations cannot be given prior to this date.**
- Please consider saving money now to include the FSTC in your 2027 giving plan!

---

**The Lutheran SGO will be ready to  
manage the FSTC when it goes live  
on January 1, 2027!**

### **For More Information, Contact:**

Scott Schumacher  
Executive Director  
[scott@lutheransgo.org](mailto:scott@lutheransgo.org)  
812) 344-4724

## PLEASE CONTINUE TO PRAY

### **For our members;**

<b>Teddy Bishop</b>	<b>Beau Bishop</b>	<b>Ruby Bonner</b>	<b>Lois Branigan</b>
<b>Margaret Burger</b>	<b>Willard Brown</b>	<b>Derek Crane</b>	<b>Dana Crane</b>
<b>Cathy Dykstra</b>	<b>Mary Ellen Emley</b>	<b>Ina Gaunt</b>	<b>Vicky Geisler</b>
<b>Jean Hille</b>	<b>Carla Johnson</b>	<b>Carla Kay</b>	<b>Gladys Middleton</b>
<b>Bob Miller</b>	<b>Jane Miller</b>	<b>Louise Nahrwold</b>	<b>Eddie Pierce</b>
<b>Adam Rice</b>	<b>Jewel Robinson</b>	<b>Doris Scott</b>	<b>Thomas Tinsley</b>
<b>Phil Urbahns</b>	<b>Dave Volmerding</b>		

### **For our friends and family:**

**Suzanne Amt, Vicky Baker** (mother of Cathy Finner), **Al Bebout** (brother of Amber Herndon), **Meg Busse** (niece of Annette Diemer), **Darryl Calloway, Jeremiah Caper** (nephew of Deanna Nelson), **Maria Gema Camumot** (aunt of Nancy Pierce), **Mark Curten** (Deanna Nelson), **Adrian Dance Jr.** (grandson of Rachelle Dance), **Matthew Derby** (friend of the Hapner family), **Donna Emley, Tina Foster** (mother-in-law of Sara Robinson), **Tammy Gibson** (sister of Threasa Lightning), **Tony Griggs** (brother of Denise DeYampert), **Collins Gusching** (great-granddaughter of Pam Morvilius) and her parents, **Alec and Georgia Gusching, Karly Herndon** (granddaughter of Dan Scheerer and Amber Herndon), **Larry Hollman** (brother-in-law of Greg Finner), **Mary R. Harris-Hill** (sister of Claudia Harris), **Don Kovac** (father of Michelle Miller), **John Moerer** (son-in-law of John and Shirley Davis), **Karen Norby** (friend of Linda Stafford), **Brian Rasso** (brother of Gene Kalthoff), **Paul Roach** (son of John and Linda Stafford), **Jordyn Ruch** (cousin of Miracle Nelson), **Patricia and Natasha Saylor** (friends of Kathy Brehm), **Tiffany Stafford** (friend of Kimberly Brooks), **Beverly Van Nalten** (mother of Jennifer Bradley), **LaToya Williams** (daughter of Ocleva Williams), **Laura White** (friend of Linda Stafford's son Paul Roach), and those we name in our hearts.

**For the families of Bethlehem Lutheran Church:** We pray for Ed Tharp, Reggie Tharp, Dorothea Thompson, Thomas Tinsley, Elena Tobin, Lavonda Turner, Philip Urbahns, Sharon Varner, Dave Volmerding, Bounma Vongphachanh, Etta Walker, and Brenda Warren, Josie Reed and Brittany Ingrams.

**For our church:** Lord God, our dwelling place throughout all generations, we thank You for the hundred years You have sustained this congregation by Your Word and Sacraments. We praise You for the saints who came before us, for their faith, sacrifices, and witness. As You have been faithful in the past, guide us now by Your Spirit, that we may walk faithfully into the future You are preparing for us.