

MINISTRY TEAM

The Rev. Ben Ahlersmeyer pastorben@bethlehemlcms.com 744-3228 ext. 302
Cell (989) 907-9481
Doug Reynolds, Director of Parish Ministry bethlehemmusic3705@gmail.com
Phone 744-3228 ext. 319
Rhonda Cheng, Office Manager..... bethfw@yahoo.com744-3228 ext. 300
Sharon Shediack, Accounting Manager..... bethfwfin@gmail.com744-3228 ext. 307
Andrew Berg, Fieldworker andrew.berg@ctsfw.edu
Brentley Lothamer, Fieldworker brentley.lothamer@ctsfw.edu
Jonathan Poppe, Fieldworker jonathan.poppe@ctsfw.edu

BOARD OF DIRECTORS

| | |
|---------------------------------|---------------------------------|
| President – Greg Shediack | <u>At Large Members:</u> |
| Vice President – Evans Branigan | Dan Bates |
| Secretary – John Stafford | Rachelle Dance |
| Treasurer – Brian Bates | Caleb DeMond |
| | Natalie Reynolds |

SCHOOLS

Lutheran South Unity School.....lsusfw.org.....744-0459
Concordia Lutheran High School.....clhscadets.com.....483-1102

COUNSELING NEEDS

Please talk to Pastor Ben Ahlersmeyer for a referral for counseling to Cross Connections.

BETHLEHEM LUTHERAN CHURCH

3705 South Anthony Boulevard
Fort Wayne, Indiana 46806-4329

www.bethlehemlcms.org

Church Office, (260) 744-3228

Fax Number, (260) 744-3229

Office Hours: 10:00 a.m. – 4:00 p.m. (Monday – Friday)

Our Worship Schedule:

Saturday Afternoon Worship Service at 4:00pm

Sunday Morning Worship Service at 9:00am

FOURTH SUNDAY IN LENT

Saturday, March 9, and Sunday, March 10, 2024



Bethlehem

LUTHERAN CHURCH

Gathering – Welcoming – Serving – Restoring

WHO WE ARE

*As forgiven children of God, Bethlehem Lutheran Church
shows Christ's love through acts of service
so that we can share the hope of the Gospel with others.*

HOLY COMMUNION

In the Bible the Apostle Paul wrote, "A man ought to examine himself before he eats of the bread and drinks of the cup." (I Corinthians 11:28) In order to examine yourself before attending the Lord's Supper, ask yourself the following questions:

- Do I believe that I am a sinner, and am I sorry for my sins?
(Proverbs 28:13; Romans 3:23; I John 1:8-9)
- Do I believe that Jesus Christ by His death offers me forgiveness for all my sins?
(Romans 5:8; Colossians 2:13; Hebrews 9:28; I John 1:7)
- Do I believe that I receive the body and blood of Christ in and with the bread and wine (not merely symbolically present)?
(Matthew 26:26-28; I Cor. 10:16; I Cor. 11:24-25)
- Do I desire to turn from my sinful ways and live a God-pleasing life?
(Isaiah 1:16; John 8:11; Romans 6:12)

If you are unable to answer "yes" to these questions or believe further instruction is needed, please talk to a pastor or an elder before communing as participating without a proper understanding of Holy Communion can be spiritually harmful (I Corinthians 11:27-29). If you can answer "yes" to these questions, then come with a repentant heart and join us in the reception of the Lord's Supper. If not, adults and children who have not yet taken part in communion instruction classes are invited to come forward for a blessing and are asked to keep their arms folded over their chest during the distribution.

*(Children's Activity bags are available in the Narthex.
Please remember to return them to the rack after the service.)*

✠ WE PREPARE OUR HEARTS ✠

PRESERVICE MUSIC

WELCOME / ANNOUNCEMENTS

RINGING OF THE BELLS

HYMN

LSB #420

"Christ, the Life of All the Living"

! INVOCATION

Pastor: In the name of the Father and of the ✠ Son and of the Holy Spirit.

People: **Amen.**

Pastor: God so loved the world,

People: **that He gave His only Son,**

Pastor: that whoever believes in Him should not perish

People: **but have eternal life.**

Pastor: Our Lenten journey leads us to the cross where Jesus gave His life,

People: **and then to the resurrection and eternal life.**

CONFESSION AND ABSOLUTION

Pastor: Though Christ has loved us with this genuine love that gives us eternal life, we sometimes ignore His love and refuse to share Christ's love with others. Still, our heavenly Father is merciful, and He invites us to draw near to Him in hope and confidence to ask for His grace.

(Silence for reflection.)

Pastor: Heavenly Father,

People: **we have sinned against You and against our neighbors. We have not loved You with our whole heart. We have not loved our neighbors as ourselves. We have not loved our enemies. Forgive us, renew our love, on account of Jesus. Amen.**

Pastor: Jesus Christ was lifted up on the tree of the cross so that we might be forgiven. His genuine love is for the world and is for you. As a called and ordained servant of Christ and by His authority, I therefore forgive you all your sins in the name of the Father and of the ✠ Son and of the Holy Spirit.

People: **Amen. We are forgiven by the genuine love of Jesus.**

HYMN OF PRAISE (Omitted during Lent)

PRAYER OF THE DAY

Pastor: The Lord be with you.

People: **And also with you.**

Pastor: Let us pray. Almighty God, our heavenly Father, Your mercies are new every morning; and though we deserve only punishment, You receive us as Your children and provide for all our needs of body and soul. Grant that we may heartily acknowledge Your merciful goodness, give thanks for all Your benefits, and serve You in willing obedience; through Jesus Christ, Your Son, our Lord, who lives and reigns with You and the Holy Spirit, one God, now and forever.

People: **Amen.**

MINISTRY OF MUSIC (9:00am) (Choir)
“For God So Loved the World” (setting by Dale Grotenhuis)

✠ WE HEAR GOD’S WORD ✠

After the reading: *L: This is the Word of the Lord. C: Thanks be to God.*

OLD TESTAMENT READING Numbers 21:4–9
(Moses lifts up the bronze serpent to save the people of Israel.)

EPISTLE Ephesians 2:1–10
(We are saved by grace through faith.)

VERSE LSB pg. 157

HOLY GOSPEL John 3:14–21
(God so loved the world.)

HYMN OF THE DAY LSB #571
“God Loved the World So That He Gave”

SERMON

“Look and Live”

✠ WE RESPOND TO GOD’S WORD ✠

NICENE CREED

OFFERING/FRIENDSHIP REGISTER

OFFERTORY LSB pg. 159

“What Shall I Render”

PRAYERS OF GOD’S PEOPLE: L: Lord, in Your mercy. C: **Hear our prayer.**
... Let us pray for the whole Church of God in Christ Jesus and for all people according to their needs. O Lord God, draw us into Your light. Expose wherever we, like Your people of old, have thought, spoken and acted against You, that in repentance we might look to Your Son lifted up on the cross and be saved from Your righteous wrath.

... Almighty God, You have set the president, and the governor, as authorities over us for our good. Bless and sustain them with all they need to govern us, that we might be ruled wisely and in accord with Your will.

... Heavenly Father, You had Moses lift up the bronze serpent in the wilderness, thereby foreshadowing Your own Son’s lifting up on the cross. Teach us to hear in the Old Testament the promises and pictures of the coming Christ, who is their Savior and ours.

... We pray for all the members of Bethlehem Lutheran Church, especially the families of Andrew Nelson, Isaac Nelson, Joe Nelson, Terri Nelson, Barb Netterville, Loan Nguyen, Patti Niday, Tom Oberholtzer, Michael Oberholtzer, Dorothy Oetting, Barbara Owen, and Blake and Ian Pettit.

... O God, You are our light and our salvation. Hide in Your shelter. We pray especially for our members **Marlene Berning, Teddy Bishop, Ruby Bonner, Lois Branigan, Willard Brown, Derek and Dana Crane, Gene Dettmer, Annette Diemer, Joan Domrow, Laverne Eickhoff, Ina Gaunt, Pastor Jeff and Vicky Geisler, LeeNathan Griggs, Herman and Jenny Guenin, Michael Johnson, Linda Kalthoff, Earl Kruger, Gladys Middleton, Bob and Jane Miller, Corinne Nahrwold, Louise Nahrwold, Barb Netterville, Barb Owen, Richard Pierce, Kim Rasmussen, Josie Reed, Adam Rice, Joan Richter, Doris Scott, Dora Thompson, Thomas Tinsley, and Phil Urbahns.**

We also pray for good health and healing for our friends and family, **Ellen Biers, Stacey Brooks** (Archie and Annie Smith's daughter), **Darryl Calloway, Maria Gema Camumot** (Nancy Pierce's aunt), **Adrian Dance Jr.** (Grandson of Rachelle Dance), **Matthew Derby** (friends of the Hapner family), **Donna Emley, Larry Hollman** (Greg Finner's Brother-in-law), **Tammy Gibson** (sister of Threasa Lightning), **Mayor Tom Henry, Dwight Johnson** (LSUS school board president), **Eching Juridico** (Nancy Pierce's mother), **Don and Dini Kovac** (Michelle Miller's parents), **John Moerer** (John and Shirley Davis' son-in-law), **John Nahrwold** (Donna Volmerding's brother), **Brian Rasso** (Gene Kalthoff's brother), **Paul Roach** (son of John and Linda Stafford), **Stacey Self** (friend of Kim Brooks), **Beverly Van Nalten** (Jennifer Bradley's mother), **Willie Wiggs Jr.** (Ocleva Williams's brother), **LaToya Williams** (Ocleva Williams's daughter), those in our community especially Kirtz, the Robinson family and all who suffer in body, mind or soul. Keep them in their day of trouble from falling into faithless fear, and uphold them with Your peace in Christ.

... O Lord, whose steadfast love endures forever, we lift up our voices in thanksgiving. You have redeemed us out of trouble and gathered us here to feed us, that our souls may not faint within us. Satisfy the longing of our hearts with Your Son's good things, His body and blood, that we may abide in Your eternal peace.

... Gracious Lord, You have made us alive in Christ even when we were dead in our trespasses and sins. Cause Your Spirit to be at work in us, that we may not carry out the sinful desires of our bodies and minds, but be Your workmanship in Christ Jesus, walking in the good works He has prepared for us.

... Lord of hosts, You gave Your only Son so that whoever believes in Him should not perish but have eternal life. Bless the work of missionaries as they carry this Gospel to the ends of the earth, that many may hear of Your love in Christ Jesus and be saved through Him. We pray for safe travels home for Joe Boway and the Illinois team. We thank You for all the prayer and financial partners who make this ministry possible.

Leader: Into Your hands, O Lord, we commend all for whom we pray, trusting in Your mercy; through Jesus Christ, our Lord.

People: Amen.

✠ HOLY COMMUNION ✠

PREFACE LSB pg. 160

PROPER PREFACE

SANCTUS LSB pg. 161

PRAYER OF THANKSGIVING

LORD'S PRAYER LSB pg. 162

WORDS OF INSTITUTION LSB pg. 162

SHARING OF THE PEACE

Pastor: The peace of the Lord be with you always.

People: Amen.

AGNUS DEI LSB pg. 163

DISTRIBUTION HYMNS (9:00am)

"O Gracious Lord, I Firmly Am Believing" LSB #635

(Choir sings sts. 1-2; Congregation sings sts. 3-5)

"My Faith Looks Up to Thee" LSB #702

POST-COMMUNION CANTICLE LSB pg. 165

"Nunc Dimittis"

POST-COMMUNION THANKSGIVING

BENEDICTION

Pastor: The Lord bless you and keep you. The Lord make His face shine on you and be gracious to you. The Lord look upon you with favor and ✠ give you peace.

People: Amen.

CLOSING HYMN LSB #392

"God Loves Me Dearly"

POSTLUDE

(Creative Worship for the Lutheran Parish, Series B, Quarter 2.
Copyright © 2023 Concordia Publishing House. All rights reserved. Used by permission.)

BULLETIN ANNOUNCEMENTS

LAST WEEK AT A GLANCE

ATTENDANCE: 102

| | |
|-----------------------------------|-------------|
| Needed for Operating & Missions | \$ 6,192.31 |
| Offering for Operating & Missions | \$ 6,196.50 |
| Online Operating & Missions | \$ 900.43 |
| Designated Funds | \$ 407.00 |
| Total Contributions | \$ 7,503.93 |

OFFERINGS

You can make one-time or recurring gifts directly on our website. It's simple and secure.

www.bethlehemlcms.org

Offerings may also be mailed to
Bethlehem Lutheran Church
3705 South Anthony Boulevard
Fort Wayne IN 46806-4329.



Please make **ALL** checks payable to Bethlehem Lutheran Church. Use the memo line on check for designation.

Food Bank Urgent needs:

Dish Soap
Mac & Cheese

ACTIVITIES AND BIBLE

STUDIES

+ THIS WEEK +



TODAY'S ACTIVITIES

9:00am Worship w/Communion
10:00am Coffee Hour – FH
10:30am Education Hour - Adults – Café
Kids – Sonshine Club Room

Monday, March 11

Tuesday, March 12

10:00am-11:30am Food Bank
6:30pm Board of Directors

Wednesday, March 13

10:00am-11:30am Food Bank
5:30pm Adult Choir – Rm 2
6:30pm Worship

7:15pm Handbell Choir - Balcony

Thursday, March 14

10:00am-11:30am Food Bank

Friday, March 15

Saturday, March 16

4:00pm Worship w/Communion

Sunday, March 17

9:00am Worship w/Communion
10:00am Coffee Hour – FH
10:30am Education Hour - Adults –Café
Kids – Sonshine Club Room

SERVING AMONG US +THIS WEEKEND+

Preacher The Rev. Ben Ahlersmeyer
Organist Doug Reynolds
Altar Guild Natalie Reynolds
Allison Cheng
Elder (4:00pm) Michael Johnson
(9:00am) Greg Shediack
Head Usher Dan Bates
Lay Readers
(4:00pm) Ruby Bonner
(9:00am) Donna Melcher
Threasa Lightning
PowerPoint Operators
(4:00pm) Carla Johnson
(9:00am) Allison Cheng
Sound Operator
(9:00am)..... Dan Scheerer
Live stream Joshua Hapner
Prayer Leader
(9:00am)..... Shirley Davis

SERVING AMONG US +NEXT WEEKEND+

Preacher The Rev. Ben Ahlersmeyer
Organist Doug Reynolds
Altar Guild Sharon Dietrich
Suzie Emley, Amber Herndon
Elder (4:00pm) Ed Ramos
(9:00am) John Bates
Head Usher Ron Gallmeyer
Lay Readers
(4:00pm) Ruby Bonner
(9:00am) Donna Volmerding
Dave Volmerding
PowerPoint Operators
(4:00pm) Charlotte Ratliff
(9:00am) Aaron Brown
Sound Operator
(9:00am)..... Dan Scheerer
Live stream Dave Volmerding
Prayer Leader
(9:00am)..... Glenn Emley

BETHLEHEM SERVICES ONLINE

The link to watch online: <https://www.facebook.com/bethlehemfortwayne>

READINGS FOR NEXT WEEK (March 16th & March 17th)

| | |
|-----------------------|-------------------|
| OLD TESTAMENT READING | Jeremiah 31:31–34 |
| EPISTLE READING | Hebrews 5:1–10 |
| GOSPEL READING | Mark 10:32–45 |

The altar flowers are provided by Annette Diemer in memory of her mother Sophia Diemer for her March 14, 1908 birthday.

EDUCATION HOUR

Education Hour meets each Sunday from 10:30am-11:30am. Adults meet in the cafeteria, and the Kids in the Sunshine Club room. Both adults and kids' classes will focus on the readings for that Sunday. The kids' program, ages 3 and up, is called "Whirl" and will include a DVD, lesson, and craft based on the theme. The goal is to have a consistent time where we can grow in God's word and then have discussion about it that week at home, since we will be studying the same thing. We hope you can join us for this exciting ministry! Please invite your friends and neighbors!

THE BETHLEHEM FAMILY LIFE MINISTRY TEAM

The Bethlehem Family Life Ministry Team invites you to join us in some new events and traditions! One of our upcoming events is Bible Study for all ages on Palm Sunday, and an Easter egg hunt following the 10:00am Easter worship service.

WORSHIP SCHEDULE FOR LENT - EASTER

Wednesday 6:30pm services

March 13 - Midweek of Lent 4

March 20 - Midweek of Lent 5

March 28 - Maundy (Holy) Thursday - 6:30pm

March 29 - Good Friday - 6:30pm

March 30 - Easter Vigil 4:00pm

March 31 - Easter Breakfast 8:30am

March 31 - Easter Sunday service 10:00am

(Midweek offerings will go to neighborhood benevolence)

GENERATIONS
of Faith

AN ALL AGES BIBLE STUDY

The Bethlehem Family Life Ministry Team invites you to a faith formation event for our entire church family. Discover the Biblical story of Palm Sunday and prepare for Holy Week at our first interactive education hour for all ages.

Who: EVERYONE AT BETHLEHEM

When: PALM SUNDAY 3/24 DURING THE EDUCATION HOUR

Where: IN THE CAFETERIA

MARCH IS SELF-CARE MONTH!

Self-harm, or self-mutilation, is the act of deliberately infliction pain and damage to one's own body. Self-harm most often refers to cutting, burning, scratching, and other forms of external injury; it can however, also include internal or emotional harm, such as consuming toxic amounts of alcohol or drugs or deliberately participating in unsafe sex.

The roots of self-harming behavior are often found in early childhood trauma, including physical, verbal, or sexual abuse. It may also be an indication of other serious mental health issues that are independent of trauma, such as depression, anxiety, or borderline personality disorder.

Self-Harm occurs most often in teenagers and young adults. Adults do engage in self-harm, particularly those with mental health conditions or a history of self-injury.

We can help by responding with compassion, and recognizing that self-harm is an attempt at coping with painful feelings, is the first step. We can encourage them to seek help, assist in finding other outlets of feelings, and make yourself available to listen if needed.

Jonah 4 3-4 *"just kill me now Lord! I'd rather be dead than alive in what I predicted will not happen." The Lord replied, "Is it right for you to be angry about this?"*

God has said you are allowed to feel every emotion. God is never mad about our struggles, but come to God when you feel out of control emotionally so He can help you with your heart. He is like a Gardener who pulls weeds in your heart- weeds that will keep you from growing in faith. Don't be afraid to go to God, He knows your heart better than you do. We can show God's love in many ways, be there, listen, hug, take to get help, and pray. God loves us all!

BEREAVEMENT MINISTRY

If you are a member of Bethlehem and experience the death of a family member who was not a member of the congregation, but feel you would also benefit from the care of our Stephen Ministry Bereavement program, please call Pastor Ben (989-907-9481), Threasa Lightning (260-417-1450) or Richard Pierce (260-450-2280), our Grief Coordinators. The Bereavement program provides a set of four short books, journeying through Grief, to send to people at four crucial times during the difficult first year after losing a loved one. Each book focuses on what the person is likely to be feeling at that point in their grief, providing care, support, compassion, and hope.

WOMEN of BETHLEHEM / LWML

THREE ZONES GATHERING

The Lutheran Women in Mission of Fort Wayne are hosting a gathering for women of all ages at Bethlehem Lutheran Church on April 13, 2024 at 8:30 with a breakfast and fellowship. The theme for our gathering is "**Into All the World**" which is based on Mark 16:15: *"Go into all the world and preach the gospel to all creation"*.

The speaker will be Sergui Trifa who will talk about how people are reached through the Romanian Ministry.

To register for this event please speak with your church's LWML representative by Sunday, April 7th. There will be a registration fee of \$7 at the door and our ingathering will be donations for the financial support of the Romanian Ministry.

So come and be a part of this meaningful event. Your presence and contribution will make a tangible difference in spreading faith and love to every corner of the world.

LWML INDIANA DISTRICT CONVENTION

Rooted in Christ - June 21-23, 2024.

- Where: Hendricks County 4-H Conference Center, Danville, IN
- Keynote Speaker: Jennie Williamson, singer and presenter on Saturday titled "Overcoming Adversity By Being Rooted in Christ" and "Rooted in Christ for Generations to Come."

What to know about convention:

Participate in the servant events on Friday from 11:00am - 3:00pm.

Sign up for a special Oktoberfest meal on Friday, 4:30pm - 6:00pm.

Participate in the LWML IN TALENT NIGHT on Saturday, June 22.

Do you have a talent to share? Contact becky.thibodeau@trinityindy.org.

Housing information will appear in the February Good News and on the website.

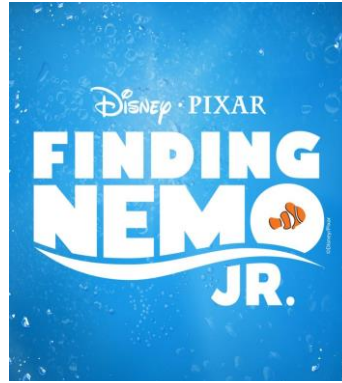
Register online. <https://sites.google.com/trinitycp.org/indistrict2024con/home>

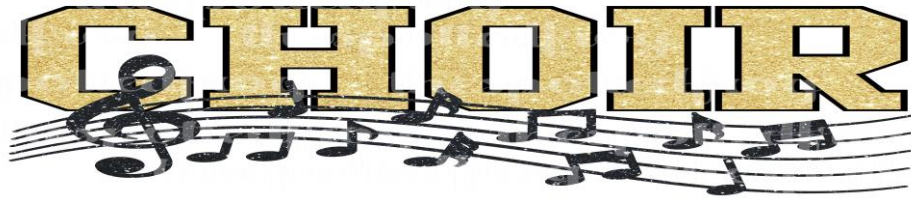
Questions?: Contact Emily Rogers at 765-778-7654 or emily12rogers6@gmail.com

FIRE AND LIGHT PRODUCTIONS

**April 11-13, Arts United Center
303 E. Main Street, Fort Wayne**

This touching extravaganza is a musical adaptation of the 2003 Pixar movie *Finding Nemo*. Tickets are \$16 and can be purchased by calling 260-422-4226. Groups of ten or more are \$14 a ticket. Seats will be chosen ahead of time for most of our shows on a first-come first-serve basis.





Have you ever wanted to sing in a church choir, but couldn't make the full-year commitment? Maybe you haven't sung since high school and would like to try it again on a short-term "trial" period. Well, the Choir here at Bethlehem is looking for additional choir members to help sing for Easter! The only time commitment needed is attending the 4 Wednesday rehearsals beginning in March, with a start time of 5:30pm. If you want more information, talk to Doug Reynolds soon! We would love to have you!!!

SPRING RUMMAGE SALE

St. John Lutheran Church, Flatrock (12912 Franke Road, Monroeville) is having a Spring Rummage Sale in their gymnasium Friday, March 22nd from 8:00am-5:00pm and Saturday, March 23rd 8:00am-noon. Bag sale on Saturday, priced items not included in bag sale and are half price on Saturday.

LSUS News

PRAYING FOR YOU!

Please pray for these students/staff: Dakota, Kali, BillyBlessing, Aaniylah, Anyla, Paingthu, Truvayah, De'Corra, Noah, Shelter.

Chapel Offerings through May

Thursday Chapel Offerings collected by our LSUS students and families make a big impact around the world! March through May offerings will go to Camp Lutherhaven and Phil's Friends. The mission of Camp Lutherhaven is to reach out with the love of Christ by providing the setting and resources to strengthen the faith of individuals and complement the ministry of churches. The mission of Phil's Friends is to provide Christ-centered support and hope to those affected by cancer.



ENROLLING NOW

Do you have a K-8 student or know someone with a K-8 student? Come join the Lutheran South Unity School family! Registration for the 2024-2025 school year is now open. Schedule a visit and see our classrooms, programs, and all of the benefits we have to offer. We seek to share our faith with all who enter our building. Contact Barb Johnson or the office at LSUS for information on how to enroll! 260-744-0459

We have financial aid and scholarships available. We also accept School Choice vouchers.

Encouragement Found in Scriptures:

He only is my rock and my salvation, my fortress; I shall not be shaken. On God rests my salvation and my glory; my mighty rock, my refuge is God.
—Psalms 62:6-7